

For Immediate Release

For Press Inquires:

Sabrina Alday

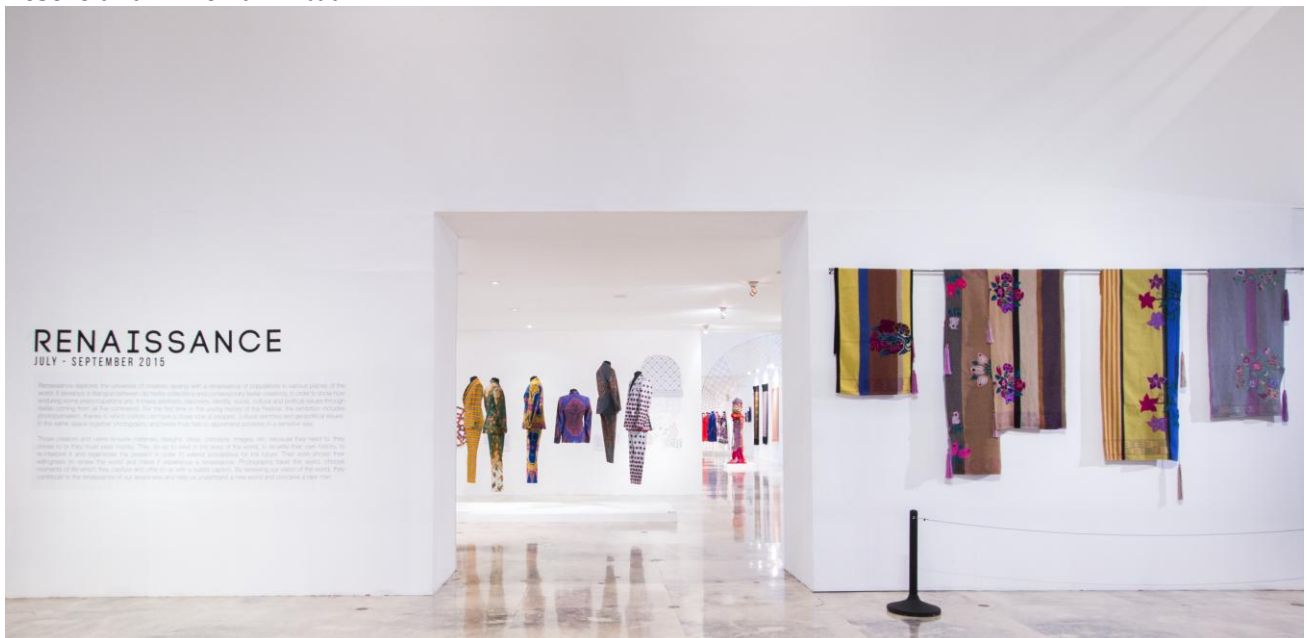
Information and Press Relations Officer

(02)708-7828;

info@metmuseum.ph

Press Release 001

The Metropolitan Museum of Manila is proud to present the **International Festival of Extra Ordinary Textiles (FITE): Renaissance Exhibition** that will take place in Manila from July 07 to September 12, 2015. After a successful run in the cities of Hue, Vietnam and Clermont-Ferrand, France, FITE: Renaissance is dedicated to intercultural exchanges on crafts and textiles. The exhibition has gathered over a hundred textile works from different parts of the world with the Philippine participation of Patis Tesoro and Anne Pamintuan.



Through this exhibition, artists, designers and craftsmen from all over the world interconnect and continue an ongoing dialogue with their audiences on recurring themes of tradition, cultural history and heritage inspiring contemporary adaptations including conservation and the preservation of valuable tangible and intangible folk practices and timeless cultural legacies.

The FITE festival has lined up exciting workshops and lectures by a Japanese bamboo sculptor, a metal lace artist from France, Mexican artist designer and Filipino scholars and designers. The FITE exhibition is jointly organized by the Musee Bargoin, the MET, the City of Claremont Ferrand, the Embassy of France to the Philippines, HABI: The Philippine Textile Council, NCCA and Security Bank.

For more information, contact the MET at 708-7828 or email info@metmuseum.ph. The Metropolitan Museum of Manila is open from Mondays-Saturdays, 10 AM-5:30 PM.

